

Electromagnetic Flowmeter

innoMag 320

parameters

Instantaneous flow , cumulative flow

Applications

Waste water treatment plants

Steel plants

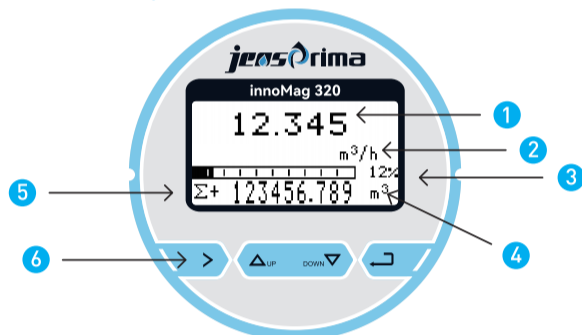
Chemical plants

Mining and metallurgy

Features

- Measurement is independent of pressure, temperature, density and flow rate.
- Bi-directional measurement is possible
- High accuracy
- Easy operation and installation
- No piping pressure loss
- Can be used for solid-containing liquid media (depending on operating conditions)

Flow Display Screen



1. instantaneous flow rate
2. instantaneous flow rate units
3. instantaneous flow rate as a percentage of flow range
4. Accumulated flow rate unit
5. Accumulation and other information $\Sigma +$: positive accumulation, $\Sigma -$: negative accumulation, Σ : net accumulation, V: current flow rate, MT: current conductivity equivalent value
6. Operation buttons: mechanical buttons/optical buttons



The innoMag 320 uses advanced technology and intelligent measurement algorithms to measure not only low conductive liquids, but also highly corrosive liquids such as acids, alkalis, salts, etc. The innoMag 320 electromagnetic flowmeter is available in a wide range of sensors and lining materials for potable water and wastewater treatment, foodstuffs, chemical industry, irrigation, iron and steel mills, paper mills, and most other operating environments.

Technical parameter

Model:	innoMag 320
Structure type:	S integrated type, L split type
Caliber range:	DN10~DN2000
Measuring range:	0.2m ³ /h~30000m ³ /h
Accuracy:	±0.5%
Repeatability:	±0.1%
Display:	backlight liquid crystal display
Installation:	flange connection can be customized clamping type
Medium conductivity:	≥10μS/cm
Electrode material:	16 stainless steel, Hastelloy C, tantalum, titanium
Lining material:	PTFE: DN10 ~ DN1000, rubber: DN50 ~ DN2000
Shell material:	controller: aluminum, sensor: carbon steel, stainless steel
Temperature:	PTFE: -40~150°C, Rubber: -10~80°C
Ambient temperature:	-20~70°C
Signal output:	4-20mA, Max. 750Ω, pulse output, frequency output
Communication protocol:	MODBUS (standard), HART (optional)
Power supply:	85-260VAC or 24VDC

Order Guide

innoMag 320 <input type="checkbox"/>	<input type="checkbox"/>	<input type="checkbox"/>	<input type="checkbox"/>	<input type="checkbox"/>	<input type="checkbox"/>	<input type="checkbox"/>	<input type="checkbox"/>	<input type="checkbox"/>
Pipe Diameter mm	Combination S Integrate L Remote	Electrode S 316L B Hastell B C Hastell C D Tantalum T Titanium P Platinum	Installation 1. Flange type 2. Clamping type 2. Insertion type	Lining F PTFE X Neoprene A Polyurethane P PFA	Interface 1. No communication 2. RS485 Modbus 3. Hart 4. Other	Power supply 1. 1-220VAC 2. 124VDC 3. Hart 4. Other	Max. Current	